

The Atlas Copco logo, consisting of the brand name in a white serif font centered between two horizontal white bars, all set against a teal rectangular background.A worker in a blue uniform, wearing a blue hard hat, safety glasses, and large grey earmuffs, is using a blue and black Atlas Copco air compressor. The worker is wearing white work gloves and is spraying a white substance onto a road surface. The background shows a road with white lane markings and a blurred landscape.

# Low pressure large air compressor

**XAS 1800: 1400 - 1800  
cfm; 72.5 - 200 psi**



# Low pressure large air compressor

## Flow to footprint ratio

This range offers high compressed air flows, in small packages to optimize both transportation costs and onsite usage. Best-in-class is the 1800 cfm compressor with up to 28 % smaller than comparable models. When it comes to 950 CFM we have single axle industry leading model.

## Maximum uptime

The XAS 1800 was developed with the operators in mind as it is easy to: control (even remote), transport, refuel, service, plan preventive maintenance... so your uptime is guaranteed. Extended service intervals (500 hours for the engine and 1000 hours for the compressor), make these compressors the workhorses of your fleet.

## Boost your return on investment

These energy-efficient workhorses tackle applications such as drill and blast, shallow depth drilling, geotechnical exploration drilling, abrasive blasting, pipeline pigging, drying and purging. Aligning pressure or flow per application not only increases versatility but also overall performance. In addition, fuel efficiency is best-in-class; for all pressure settings.

## Customized to your needs

Whether it is a combination of different air quality features like aftercoolers, water separators and filters, or a design in line with your company branding; this range can be optimized for your business requirements.



### XAS 1800

- Flow: 1400 up to 1800 cfm
- Pressure: 72.5 up to 200 psi

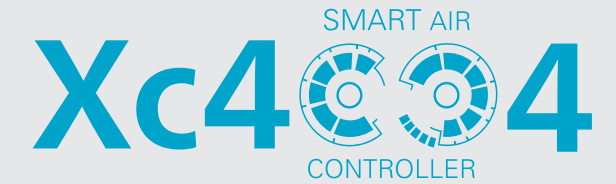
# Features & benefits

## Stop compressing air – start controlling it!






### Smart Air Xc4004 controller

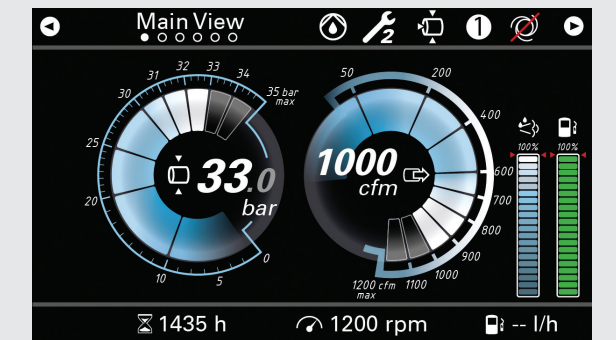
The Smart Air Xc4004 controller features the latest innovations. We believe a controller should put you in complete control, while being intuitive, and most importantly easy to use and navigate.

Smart controls also protect your investment: improve your efficiency while decreasing the operating costs of your equipment through advanced insights.

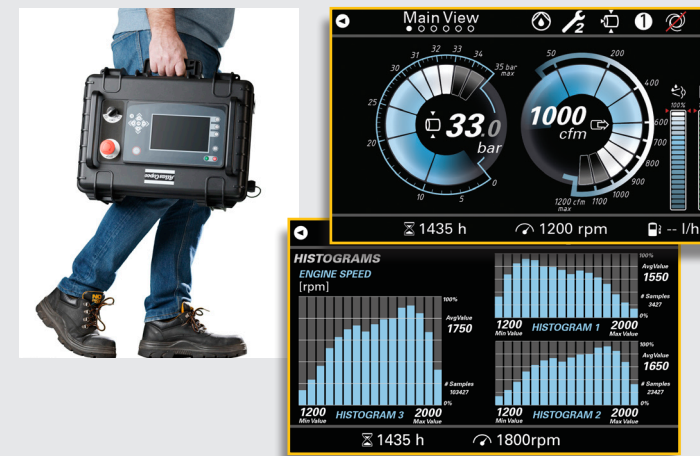


#### Advanced features:

-  Smart user interface with key parameters at first sight.
-  Mirror application for remote control.
-  Audible, clear warning system for any deviations.
-  Robust design which resists water and dust (IP67 rated).
-  Takes efficiency, control and connectivity to the next level.



- Easy to use interface
- Powerful insights increase uptime
- Save time through remote controlling



### Intuitive controller with powerful insights

- Intuitive and easy to use
- Simultaneous view of pressure and flow
- On-board histogram of 15 parameters
- 7 inch screen
- IP67 rated

### Remote controller

- Optional mirror box for remote controlling

### FuelXpert

- Reduces fuel consumption to up to -10% at 75% load.
- Lowers operational costs, increases project profitability.

# Features & benefits



## Heavy duty enclosure

- Bumper protection
- External lifting shackles
- 2 layer corrosion protection for the metal undercarriage
- Easy to service due to centralized external coolant and oil drain

## Cool, clean and dry air

- Integrated filters remove oil aerosol content down to 0.01mg/m<sup>3</sup> and particles down to 0.01 micron at the industry's lowest pressure drop.
- Compact water separator in combination with the aftercooler removes water from the compressed air.
- High efficiency aftercooler reduces compressed air temperature.
- Secondary outlet for the quality air features improves the isolation of the hoses and hardware.

## External fuel tank connection

- Easy access to the fuel tank for continuous operation

## Warning light for battery cut-off switch

- Turning off the battery while after-treatment purging is in progress can freeze DEF in cold climates; harming your investment.
- This range features a clear indicator warning that informs you when it is safe to turn off the battery at the end of the operation.



## Technical data

		XAS 1800
Normal effective working pressure	Psi(g)	200 - 72.5
Free Air Delivery	cfm	1800 - 1400
Fuel consumption @100%	Gal/h	22.9
Max sound power level (Lpa)	dB(A)	76
Capacity of compressor oil system	US GAL	30
Max. Ambient temperature	°F	120
Min. Ambient temperature	°F	-4
Engine		
Engine type		John Deere
Emission regulation		T4F
Max. Power	Hp	540
Oil capacity	US Gal	15.5
Dimensions		
Dimensions	in	236 x 89.4 x 101
Fuel tank capacity	US Gal	240
Weight	lbs	18900

## Standard features

Controller XC4004

FuelXpert

## Options

UD+

Integrated air treatment with aftercooler, water-separator and coalescent filters

Skid-mounted

Cold weather equipment

Remote controlling through mirror box

Special colors

# Power Technique Solutions Portfolio

Atlas Copco's Power Technique Business Area has a forward-thinking philosophy. For us, creating customer value is all about anticipating and exceeding your future needs – while never compromising our environmental principles. Looking ahead and staying ahead is the only way we can ensure we are your long term partner.

## Air compressors

### Ready to go



- 110-250 cfm
- 58-125 psi

### Versatility



- 400-900 cfm
  - 58-200 psi
- \*Diesel and electric options available

### Productivity partner



- 950-1800 cfm
  - 100-508 psi
- \*1000-5000 psi with Boosters

## Generators

### Portable



- 1.6-12 kVA

### Mobile



- 25-1200\* kVA

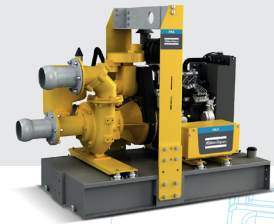
## Dewatering pumps

### Electric submersible



- up to 6,100 g/min

### Centrifugal diesel driven



- up to 6,155 g/min

## Light towers

### Metal halide



### LED



Photos and illustrations contained herein might depict products with optional and/or extra components which are not included with the standard version of the product and, therefore, are not included in a purchase of such product unless the customer specifically purchases such optional/extra components. We reserve the right to change the specifications and design of products described in this literature without notice. Not all products are available in all markets.

**Atlas Copco**

Atlas Copco Power Technique  
[atlascopco.com/ptba](http://atlascopco.com/ptba)